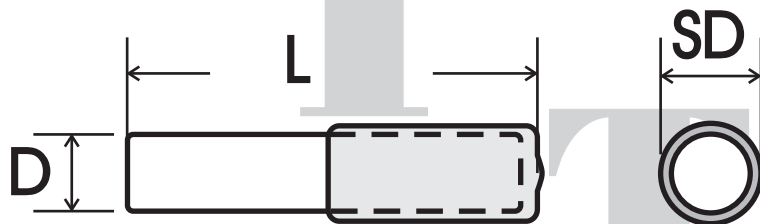


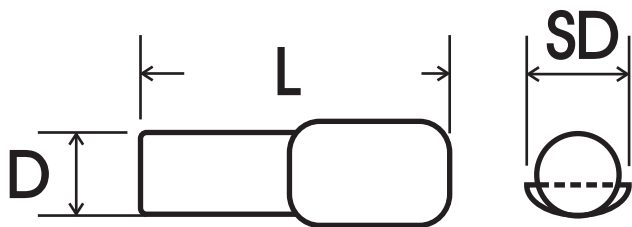


TITAN
HARDWARE INTERNATIONAL
 7711 AMIGOS AVE, SUITE C, DOWNEY, CA 90242
 LOCAL PH 562-803-1695 FAX 562-803-6605
 EMAIL SALES@TITANHARDWARE.COM

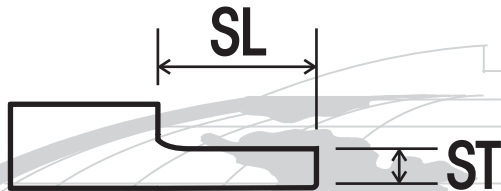
SHELF SUPPORTS



TYPE PSG
GLASS SHELF SUPPORT
ZINC PLATED WITH BLACK
VINYL CAP



TYPE PSS
SPOON SHELF SUPPORT
ZINC YELLOW PLATED



MATERIAL = LOW CARBON STEEL

PART NUMBER	DISCRIPTION DXL	SD	SL	ST	CTN. QTY.	LBS/M
PSG-M05-M025-SZ-VB	M5 X 25MM	N/A	N/A	N/A	4,000	8.8
PSS-M05-M020-S-YZ	M5 X 20MM	1/4"	3/8"	.108	4,000	6.2
PSS-F04-M020-S-YZ	1/4 X 20MM	5/16"	3/8"	.126	3,000	9.8

PLEASE NOTE OTHER SIZES AVAILABLE UPON REQUEST. PLEASE FEEL FREE TO INQUIRE.

TOLL FREE PH 1-888-551-0456 FAX 1-888-551-0454

WWW.TITANHARDWARE.COM

005-001

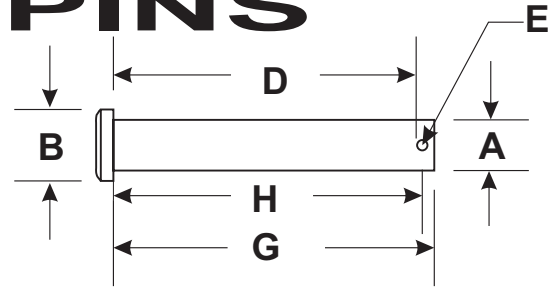


TITAN
HARDWARE INTERNATIONAL
 7711 AMIGOS AVE, SUITE C, DOWNEY, CA 90242
 LOCAL PH 562-803-1695 FAX 562-803-6605
 EMAIL SALES@TITANHARDWARE.COM

CLEVIS PINS

MATERIAL = LOW CARBON STEEL
AVAILABLE IN PLAIN AND ZINC FINISH

LENGTH DIMENSIONS TOLERANCES
ARE + OR - .02"



A & G	H	D	E	B	C	A (TOL)
1/4" x 1 "	29/32"	55/64"	3/32"	3/8"	3/32"	.248/.243
1/4" x 1 1/2 "	1 13/32"	1 23/64"	3/32"	3/8"	3/32"	.248/.243
1/4" x 1 3/4 "	1 21/32"	1 39/64"	3/32"	3/8"	3/32"	.248/.243
1/4" x 1 7/8 "	1 25/32"	1 47/64"	3/32"	3/8"	3/32"	.248/.243
1/4" x 2"	1 29/32"	1 55/64"	3/32"	3/8"	3/32"	.248/.243
1/4" x 2 1/8"	2 2 1/32"	1 63/64"	3/32"	3/8"	3/32"	.248/.243
1/4" x 2 1/4"	2 5/32"	2 7/64"	3/32"	3/8"	3/32"	.248/.243
1/4" x 2 3/8"	2 9/32"	2 15/64"	3/32"	3/8"	3/32"	.248/.243
1/4" x 2 1/2"	2 13/32"	2 23/64"	3/32"	3/8"	3/32"	.248/.243
1/4" x 2 5/8"	2 17/32"	2 31/64"	3/32"	3/8"	3/32"	.248/.243
1/4" x 2 3/4"	2 21/32"	2 39/64"	3/32"	3/8"	3/32"	.248/.243
1/4" x 3"	2 29/32"	2 55/64"	3/32"	3/8"	3/32"	.248/.243
1/4" x 3 1/4"	3 5/32"	3 7/64"	3/32"	3/8"	3/32"	.248/.243
1/4" x 3 1/2"	3 13/32"	3 23/64"	3/32"	3/8"	3/32"	.248/.243
1/4" x 3 3/4"	3 21/32"	3 39/64"	3/32"	3/8"	3/32"	.248/.243
1/4" x 4 "	3 29/32"	3 55/64"	3/32"	3/8"	3/32"	.248/.243
1/4" x 4 1/2"	4 13/32"	4 23/64"	3/32"	3/8"	3/32"	.248/.243
1/4" x 5"	4 29/32"	4 55/64"	3/32"	3/8"	3/32"	.248/.243
5/16" x 1 "	55/64"	25/32"	9/64"	7/16"	3/32"	.311/.306
5/16" x 1 1/2 "	1 23/64"	1 9/32"	9/64"	7/16"	3/32"	.311/.306
5/16" x 1 3/4 "	1 39/64"	1 17/32"	9/64"	7/16"	3/32"	.311/.306
5/16" x 1 7/8 "	1 47/64"	1 21/32"	9/64"	7/16"	3/32"	.311/.306
5/16" x 1 15/16 "	1 51/64"	1 23/32"	9/64"	7/16"	3/32"	.311/.306
5/16" x 2"	1 55/64"	1 25/32"	9/64"	7/16"	3/32"	.311/.306
* 5/16" x 2 1/8"	1 63/64"	1 63/64"	9/64"	7/16"	3/32"	.311/.306
5/16" x 2 3/16 "	2 3/64"	1 31/32"	9/64"	7/16"	3/32"	.311/.306
5/16" x 2 1/4"	2 7/64"	2 1/32"	9/64"	7/16"	3/32"	.311/.306
* 5/16" x 2 3/8"	2 15/64"	2 5/32"	9/64"	7/16"	3/32"	.311/.306
5/16" x 2 1/2"	2 23/64"	2 9/32"	9/64"	7/16"	3/32"	.311/.306
5/16" x 2 5/8"	2 31/64"	2 13/32"	9/64"	7/16"	3/32"	.311/.306
5/16" x 2 3/4"	2 39/64"	2 17/32"	9/64"	7/16"	3/32"	.311/.306
5/16" x 3"	2 55/64"	2 25/32"	9/64"	7/16"	3/32"	.311/.306
5/16" x 3 1/4"	3 7/64"	3 1/32"	9/64"	7/16"	3/32"	.311/.306
5/16" x 3 1/2"	3 23/64"	3 9/32"	9/64"	7/16"	3/32"	.311/.306
5/16" x 3 3/4"	3 39/64"	3 17/32"	9/64"	7/16"	3/32"	.311/.306
5/16" x 4 "	3 55/64"	3 25/32"	9/64"	7/16"	3/32"	.311/.306
5/16" x 4 1/2"	4 23/64"	4 9/32"	9/64"	7/16"	3/32"	.311/.306
5/16" x 5"	4 55/64"	4 25/32"	9/64"	7/16"	3/32"	.311/.306

TOLL FREE PH 1-888-551-0456 FAX 1-888-551-0454

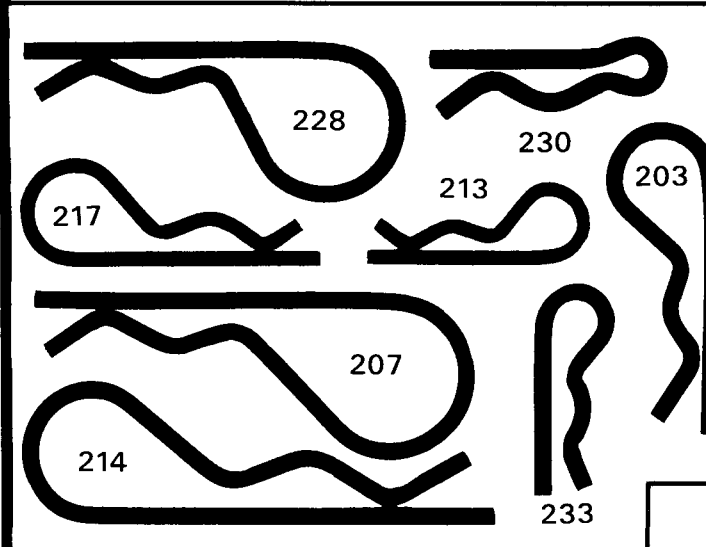
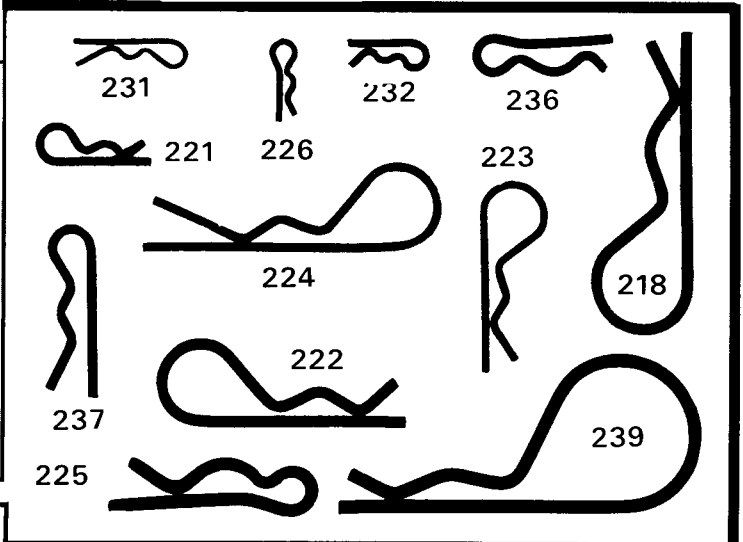


TITAN HARDWARE INTERNATIONAL

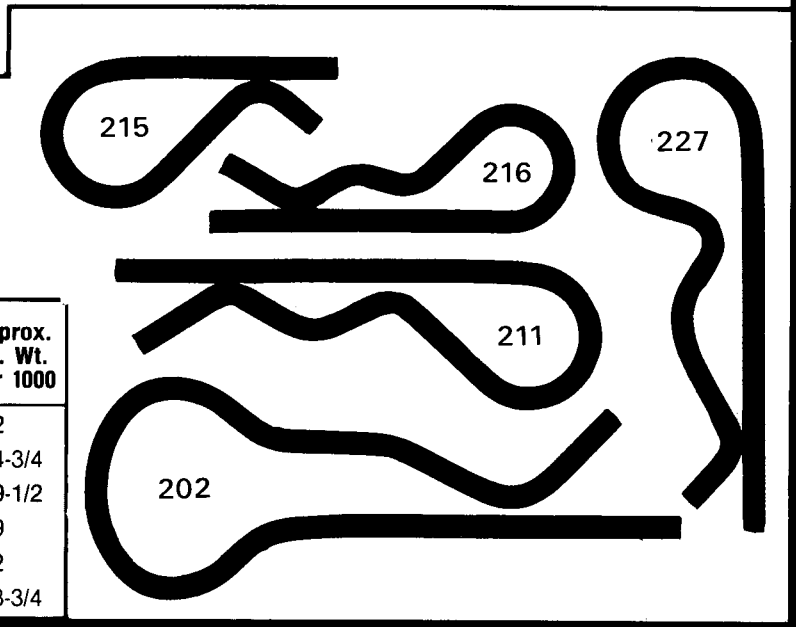
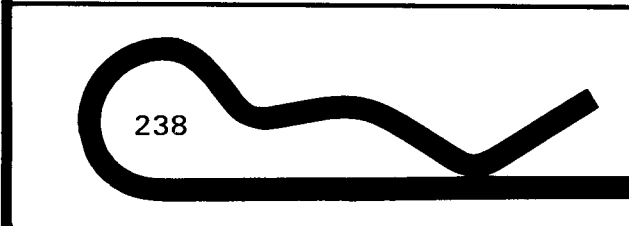
7711 AMIGOS AVE, SUITE C, DOWNEY, CA 90242
 LOCAL PH 562-803-1695 FAX 562-803-6605
 EMAIL SALES@TITANHARDWARE.COM

Shown at Actual Size

TITAN Clip No.	Wire Dia.	Drill Hole Size	Min. Shaft Dia.	Max. Shaft Dia.	Overall Length	Inside Dia. of Eye	Approx. Lb. Wt. Per 1000
231	.028	1/32	1/8	5/32	.600	.093	1/4
226	.035	.040	7/64	9/64	7/16	.078	1/4
232	.042	.047	1/16	1/8	7/16	.080	1/3
223	.042	3/64	3/16	1/4	1	1/4	7/8
221	.047	1/16	1/8	3/16	19/32	1/8	5/8
224	.047	1/16	1/4	3/8	1-9/16	5/16	1-3/4
236	.054	1/16	3/16	1/4	3/4	1/8	1
237	.054	1/16	1/4	3/8	7/8	9/64	1-1/4
222	.062	5/64	1/4	1/2	1-5/16	5/16	2-1/2
218	.062	5/64	3/8	1/2	1-9/16	3/8	3
225	.072	5/64	5/16	3/8	1-3/32	9/64	2-5/8
239	.072	5/64	3/8	1/2	1-7/8	5/8	5-1/2



TITAN Clip No.	Wire Dia.	Drill Hole Size	Min. Shaft Dia.	Max. Shaft Dia.	Overall Length	Inside Dia. of Eye	Approx. Lb. Wt. Per 1000
* 213	.080	3/32	1/4	3/8	1-3/16	1/4	3-3/4
217	.080	3/32	3/8	1/2	1-9/16	3/8	5
203	.093	7/64	1/4	1/2	1-5/8	3/8	7
207	.093	7/64	1/4	5/8	2-5/16	5/8	10
228	.093	7/64	3/8	1/2	2	5/8	9
214	.093	7/64	3/8	3/4	2-1/2	9/16	10-1/4
233	.093	7/64	1/4	1/2	1-1/8	1/4	4-5/8
230	.105	1/8	5/16	3/8	1-1/4	1/8	6



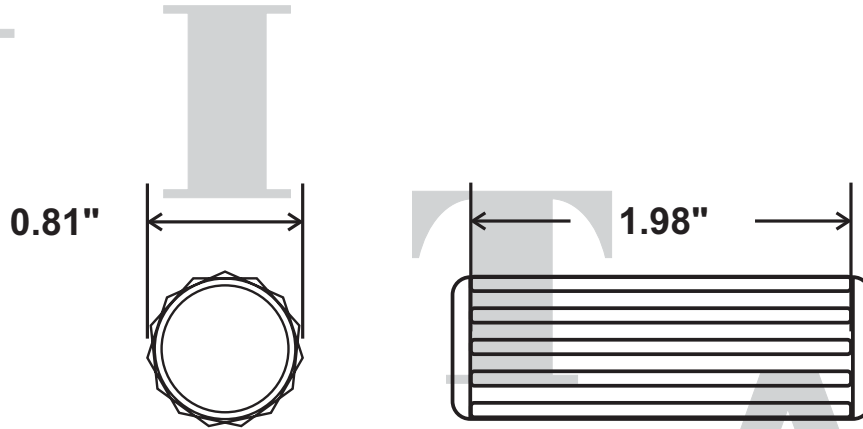
TITAN Clip No.	Wire Dia.	Drill Hole Size	Min. Shaft Dia.	Max. Shaft Dia.	Overall Length	Inside Dia. of Eye	Approx. Lb. Wt. Per 1000
215	.125	9/64	1/2	3/4	1-9/16	1/2	12
216	.125	9/64	1/2	3/4	1-15/16	7/16	14-3/4
211	.125	9/64	7/16	3/4	2-9/16	9/16	19-1/2
227	.125	9/64	5/8	7/8	2-1/2	5/8	19
238	.125	9/64	3/4	1-1/8	2-7/8	5/8	22
202	.125	9/64	3/4	1-1/8	3-1/8	1	23-3/4



TITAN
HARDWARE INTERNATIONAL
7711 AMIGOS AVE, SUITE C, DOWNEY, CA 90242
LOCAL PH 562-803-1695 FAX 562-803-6605
EMAIL SALES@TITANHARDWARE.COM

T WOOD DOWEL PINS

(HARDWOOD PLAIN STRAIGHT FLUTED)



PART NUMBER	DISCRIPTION	CTN. QTY.	LBS/M
WDPF-M5-M25-B	5MM X 25MM	10,000	.72 LBS
WDPF-M8-M25-B	8MM X 25MM	10,000	1.9 LBS
WDPF-M8-M30-B	8MM X 30MM	10,000	2.2 LBS
WDPF-F6-F24-B	3/8" X 1 1/2"	10,000	3.4 LBS
WDPF-F8-F28-B	1/2" X 1 3/4"	10,000	5.6 LBS

PLEASE NOTE OTHER SIZES AVAILABLE UPON REQUEST. PLEASE FEEL FREE TO INQUIRE.